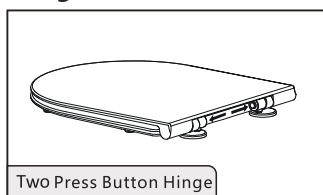
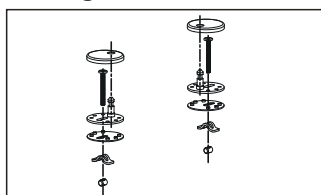


Assembly Instruction for seat covers of Like/Brio/Flut/Speed/Cruise/Hit collections.

Hinges



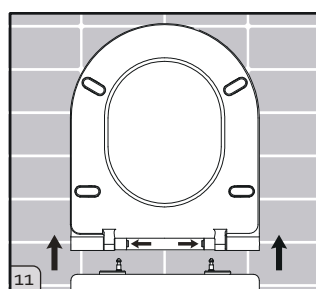
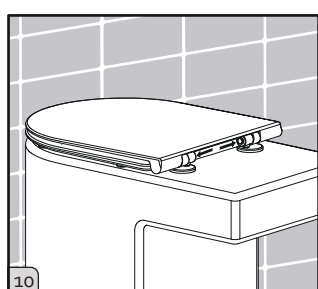
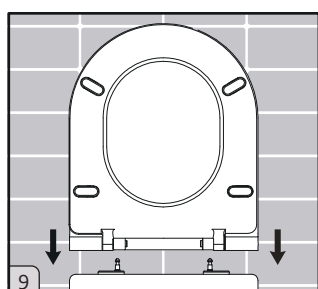
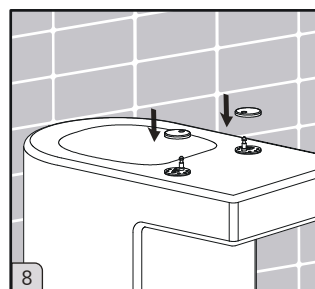
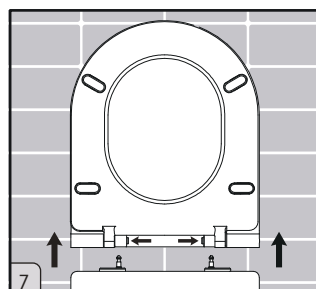
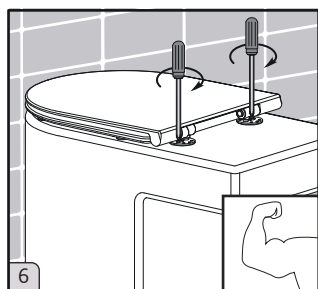
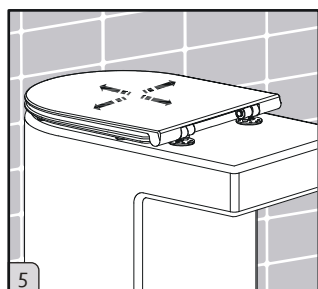
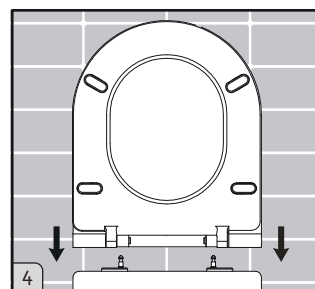
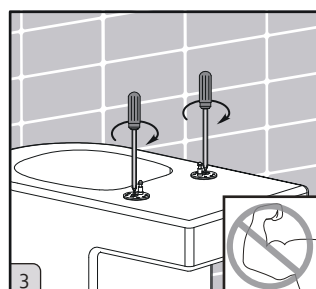
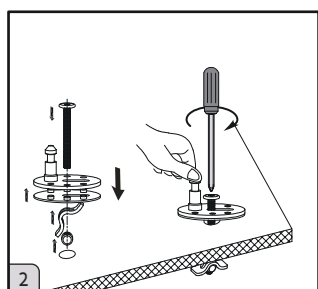
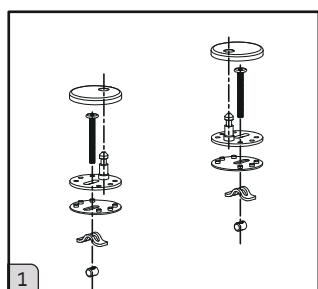
Fittings



Assembly Steps

- Before installation, please check all spare parts are ready and match.

PRIMA DELL'INSTALLAZIONE CONTROLLARE CHE TUTTI GLI ELEMENTI DEI FISSAGGI SIANO PRESENTI E CHE COMBACINO.



4. Before attaching the seat, move mounting bases so posts align with holes in the back of the seat. Once aligned, carefully lower the seat (holes) onto the mounting post.

Prima di fissare il sedile, muovere la base dei fissaggi in modo da allinearsi con i fori che si trovano nella parte posteriore del sedile. Una volta allineati abbassare il sedile posizionandolo sui perni di fissaggio.

7. Lift the toilet seat up to the vertical position, press the buttons on the hinges for quick release and remove the toilet seat.

Sollevare il coprivaso sino alla posizione verticale, premere i pulsanti delle cerniere per lo sganciamento rapido e rimuovere il coprivaso.

9. When mounting the seat make sure the posts align with holes in the back of seat. And carefully lower seat back into place ("click" will heard). Note: Do not push hard or force seat onto posts. (If difficult, re-check alignment.)

Quando si monta il sedile assicurarsi che i perni siano allineati con i fori che si trovano nella parte posteriore del sedile. Inserire con attenzione il sedile sui perni (si sentirà un "click"). Nota: non spingere con forza il sedile sui perni (se necessario ricontrollare l'allineamento dei perni con i fori del sedile).

11. To remove the seat, open it to vertical position, press the quick release buttons on the sides of the hinges (should hear a "Click"), then lift the seat straight up.

Per rimuovere il sedile, aprirlo sino alla posizione verticale, premere i tasti di sgancio rapido che si trovano ai lati delle cerniere (si deve sentire un "Click"), quindi sollevarlo verso l'alto.